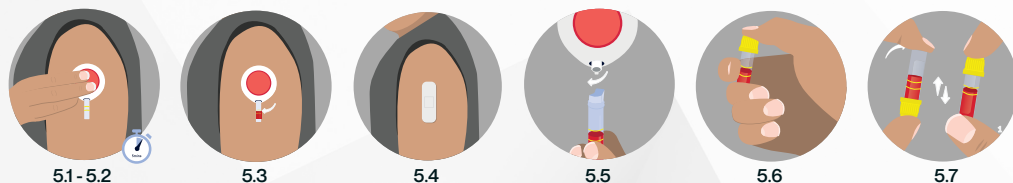


## Step 5: Collecting the blood



- 5.1 Whilst the completely prepared Tasso is on your arm, press the red button firmly until you hear click, then release it.
- 5.2 Allow some time for blood to start flowing and fill to the 600 mark on the tube.  
**Note:** Around 5 minutes should be enough to fill your tube, so you can set a timer for 5 minutes if you prefer or just use your mirror to monitor the blood collection.
- 5.3 Once the tube has reached the required level, gently peel the Tasso device off your arm.
- 5.4 Clean the area with supplied cleansing wipe and apply a plaster.
- 5.5 Remove the tube from the Tasso device (you may need to wiggle it a little).
- 5.6 Place the original gold cap back onto the tube securely.
- 5.7 Gently turn the tube upside down and back slowly about 10 times to activate.

## Step 6: Posting the sample

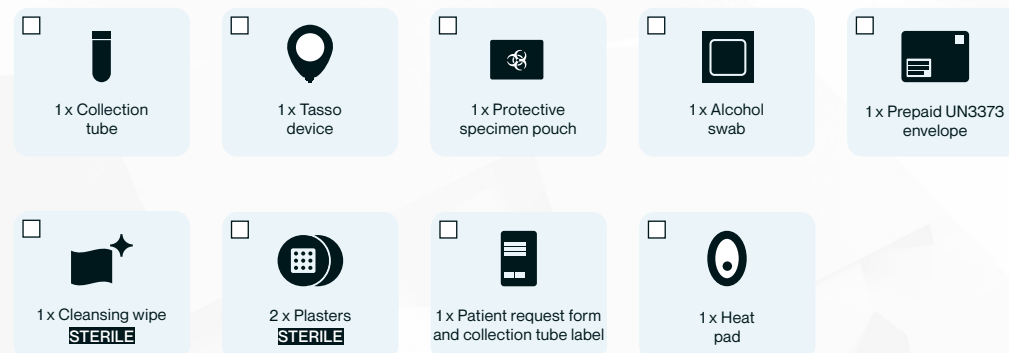


- 6.1 Make sure you have registered your test kit with your healthcare provider if indicated to do so on the request form, before sending your sample
- 6.2 Take 1 of the labels which contains a barcode, your name and date of birth on, from the patient request form and affix onto the tube, making sure it's stuck down firmly.
- 6.3 Keep a record of your order/barcode reference and the Royal Mail postage label tracking reference for future reference.
- 6.4 Place the tube into the protective specimen pouch and seal it as shown on the instructions on the pouch.
- 6.5 Put the completed patient request form and the sealed pouch back into the box and close it.
- 6.6 Place the box inside the UN3373 prepaid envelope and seal it.
- 6.7 Post your sample using your local post box, and dispose of any used items according to your local waste guidelines.

**Important:**  
The patient request form must be included and returned, otherwise the lab will not be able to process your sample.

## Let's get started.

What is in your kit?



Last Reviewed February 2026 | Version: V1.2 | IFU-Nexus-03

## Important Information.

### Intended Use:

This kit is made to help collect and safely transport small blood samples taken from capillaries.

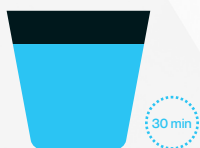
This is for 18+ use only.

Please read the whole instructions form before starting, if you have any questions, please ask your healthcare provider.

- This is a medical device for in vitro diagnosis.
- The Tasso device is a single use item. Discard the entire device after use.
- Keep an eye out for infection symptoms. Seek medical advice if the wound site turns red, hot, or swollen; if you use anticoagulant medication, your risk of increased bleeding is higher, please do not use.
- If the bleeding does not stop, apply strong pressure and raise your hand. If that does not work, please seek medical advice.
- Use only the tools that are included in your package.
- Keep the kit out of the reach of children, animals, sunlight, fire, and smoke.
- If the temperature is higher than 25 °C, please do not perform sample collection.
- Slight bruising, leftover marks, or scarring may occur at the sample collection site. Collecting samples repeatedly from the same area may raise the likelihood of scarring and affect the healing process.
- It's best to use this device whilst sitting, as some people may feel faint during blood sampling. If you start to feel dizzy or lightheaded, sit down right away.
- Any blood spills should be cleaned up and disinfected as soon as possible.

Keep away from direct sunlight	Manufacturer	Single use only
Do not get wet	Instruction for use (IFU)	<b>STERILE</b> Sterile
Temperature limit 25°C	Use by date	101 Batch code
UK conformity assessed	In vitro diagnostic medical device	

## Step 1: Prepare



Drink at least two glasses of water about 30 minutes beforehand to help improve blood flow.



Complete and post your test, between Monday and Thursday. Avoid Fridays, Saturdays, and Sundays to prevent delays in transit.



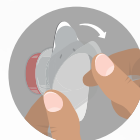
Allow around 30 minutes to prepare and complete this test.

## Step 2: Set up the test



- 2.1 Remove all the components from your test kit and lay them out on a table.
- 2.2 Tick off all the items that are in your kit from the "What is in your kit?" section.
- 2.3 Register your test kit with your healthcare provider if directed to do so on the patient request form.
- 2.4 Fill in any missing details on the patient request form.
- 2.5 You will need a stopwatch to carry out this test and it also may be helpful to be in front of a mirror to see how much blood has been collected.
- 2.6 Keep some fresh tissues nearby before you begin to wipe any excess blood.
- 2.7 Wash and dry your hands with a fresh tissue.

## Step 3: Attach the Tube to Tasso device



3.1

3.1 Remove the Tasso device from its outer packaging.



3.2

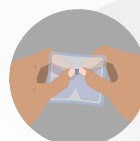
3.2 Twist off and remove the gold cap from the collection tube, and place it to one side, as you will need to put it back on later.



3.3

3.3 Insert the tube onto the Tasso device until it's firmly in place.  
**Make sure it's secure but not so tight you can't get it off again later.**

## Step 4: Prepare your arm for blood draw



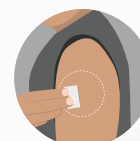
4.1

4.1 Start by activating the heat pad—the metal disc inside is curved, press the metal disc so it clicks. The gel should instantly start to turn cloudy and get warm, if it does not, press/click it again.



4.2 - 4.3

4.2 When the pad is completely cloudy, place it on the upper area of your arm where you'll be collecting the sample.



4.4

4.3 Rub the warmed pad over the area for around 2 minutes, until your arm feels warm, to help increase blood flow.

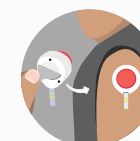


4.5

4.4 Clean the same area on your arm using the alcohol swab.

4.5 Remove clear cover from red button on Tasso device.

4.6 Peel tab away from the back of the Tasso device and apply it to the prepared area on your upper arm so the tube is vertical to aid the blood flow from the Tasso into the tube.



4.6 - 4.7 - 4.8

4.7 Ensure that the Tasso device is secured on your arm.

4.8 Look in the mirror to make sure you can see the fill lines on the tube as you will need to fill to the 600 mark.